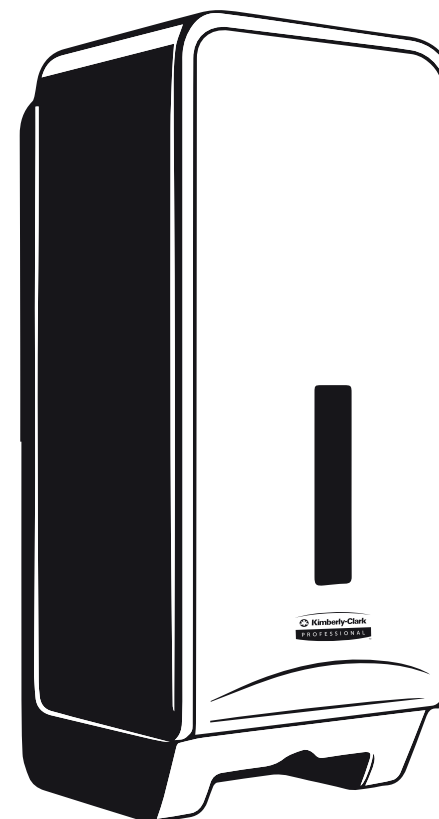




Legal



ICON™ Folded Toilet Tissue Dispenser User Guide



©/™ Trademarks of Kimberly-Clark Worldwide, Inc. or its affiliates, © KCWW
©/™ Marques de commerce de Kimberly-Clark Worldwide, Inc. ou de ses filiales, © KCWW.
Kimberly-Clark Europe Limited, Walton Oaks, Dorking Road, Tadworth, Surrey, KT20 7NS, UK
www.kcprofessional.co.uk + 44 (0) 1737 736000

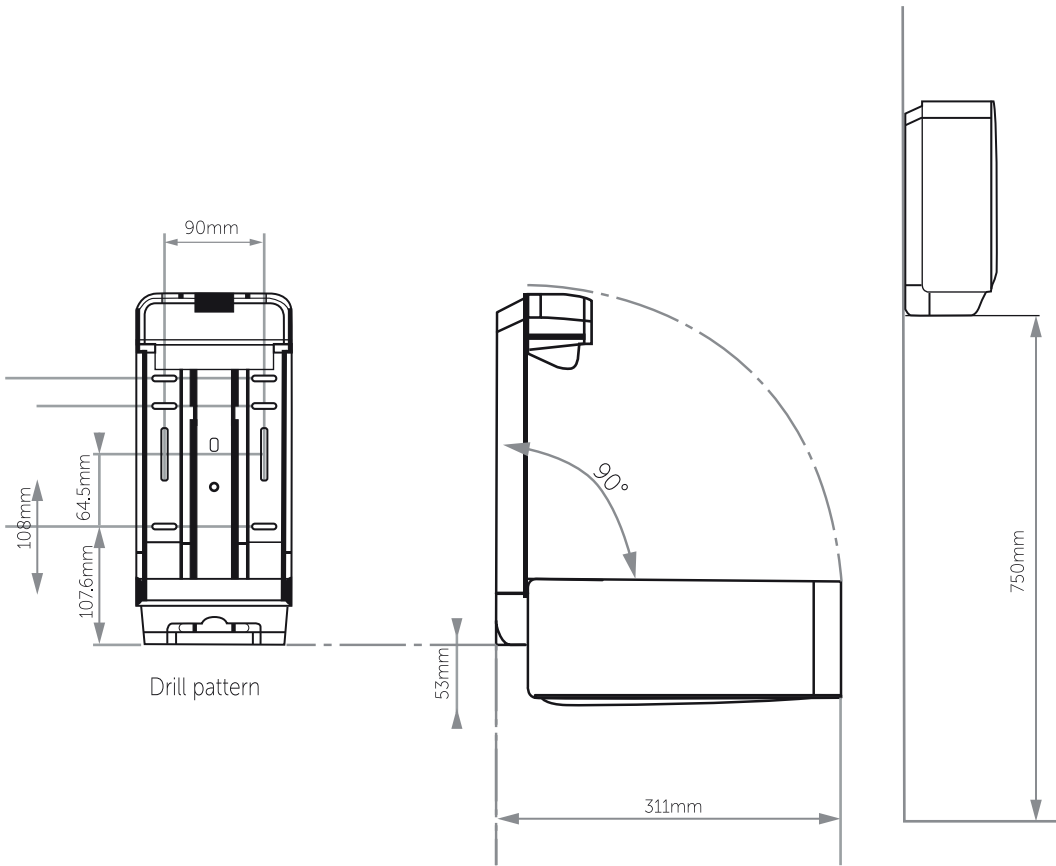
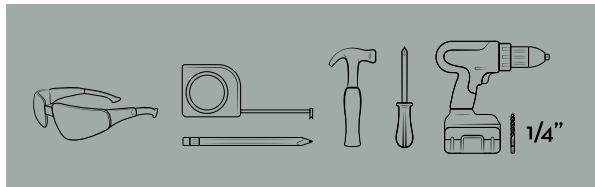
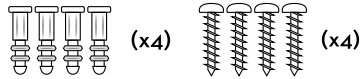
Made in Germany
Distributed in the U.S. by Kimberly-Clark Global Sales, LLC, Roswell, GA 30076-2199
Distributed in Canada by Kimberly-Clark Inc., Mississauga, Ontario L5B 3Y5
Distributed in Australia by Kimberly-Clark Australia Pty. Limited, Level 4, 100 Arthur Street, North Sydney,
NSW 2060 Tel: 1800-647-994 www.kcprofessional.com.au
Distributed in New Zealand by Kimberly-Clark New Zealand Level 2, 123 Carlton Gore Rd, Newmarket,
Auckland 1023, Tel: 0800-447-814 www.kcprofessional.co.nz
Kimberly-Clark B.V., Copernicuslaan 35, 6716 BM Ede, Netherlands
www.kcprofessional.co.uk
Kimberly-Clark of South Africa (Pty) Ltd, 2929 on Nicol, William Nicol Drive, Bryanston, Johannesburg, 2929



Install Dispenser

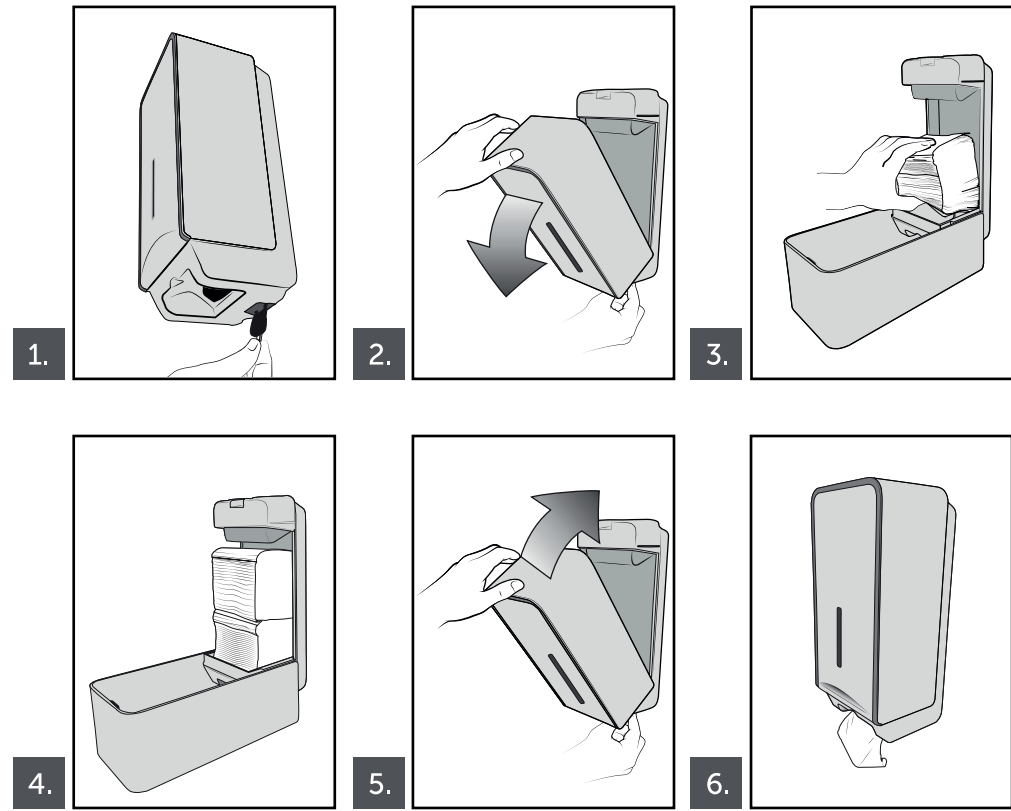
Montageanleitung (DE)
Instructions d'installation (FR)
Instrucciones de instalación (ES)
安装说明 (中国人)

Enclosed**



Loading Instructions

Befüllanleitung (DE)
Instructions de remplissage (FR)
Instrucciones de carga (ES)
加载说明



Asia-Pacific Region

