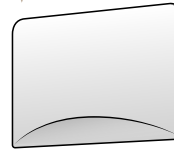
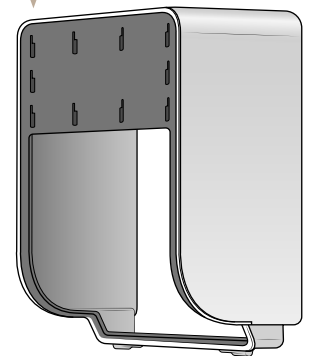


Faceplate\*  
Plaque frontale\*



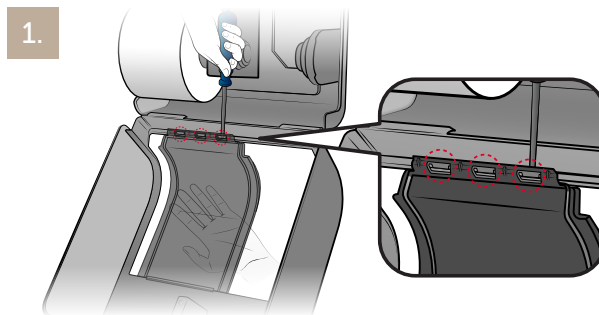
Cover  
Couvercle



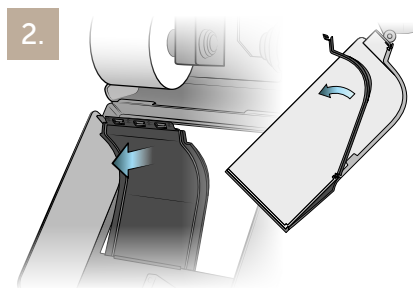
### Faceplate Replacement

### Remplacement de la plaque frontale

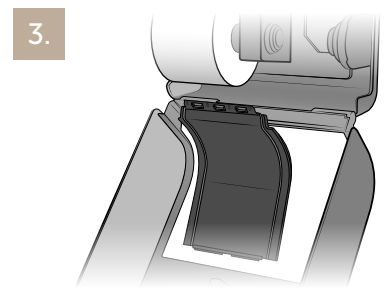
1. Open the dispenser lid then position sliding door to left side of dispenser opening. Align 3 teeth of bottom sliding door to 3 notches on sliding track. Gently support sliding door with your hand while using flat screw driver to lift and pry each tooth one at a time to disengage door from sliding track.



2. Rotate bottom of sliding door inwards.

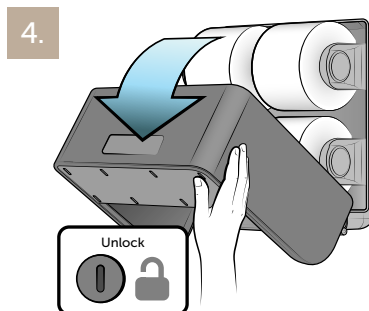


3. Pull entire sliding door up vertically to disengage top of door from upper sliding track. Door is now completely separated from cover.



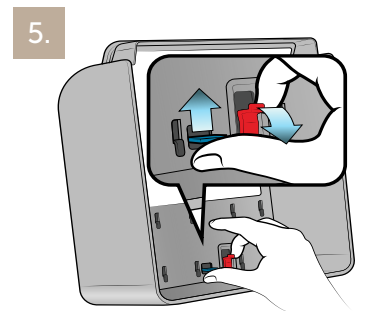
4. To unlock the dispenser, insert key into lock and rotate the key a quarter turn. Gently pull the cover forward. The key may be removed at this point. The cover will automatically open, do not force.

Pour déverrouiller le distributeur, insérer la clé dans le verrou et faire tourner d'un quart de tour. Tirer doucement le couvercle vers l'avant. Retire la clé. Le couvercle s'ouvrira automatiquement, ne pas forcer.



5. Locate the locking features on the faceplate on the inside cover. Release the faceplate by lifting on the release lever (red) and pushing up on the push tab (blue). Brace the underside of the faceplate.

Repérer les points de verrouillage de la plaque frontale à l'intérieur du couvercle. Dégager la plaque frontale en soulevant le levier de dégagement (rouge) et en appuyant sur la languette poussoir (bleue). Prendre la plaque frontale par le dessous.



6. After the faceplate is released, remove it by taking it out from under the cover. Make sure to brace the underside of the faceplate so it doesn't fall to the floor once released.

Après avoir dégagé la plaque frontale, l'enlever en la tirant sous le couvercle. Veiller à maintenir le dessous de la plaque frontale pour qu'elle ne tombe pas par terre une fois dégagée.

7. Close the cover completely and make sure it locks shut.

Bien refermer le couvercle en s'assurant qu'il est verrouillé.

8. Align the locking features on the new faceplate (red) to the corresponding slots on the dispenser front face (blue). Push the new faceplate up against the dispenser and slide it up to slot it into the locking features.

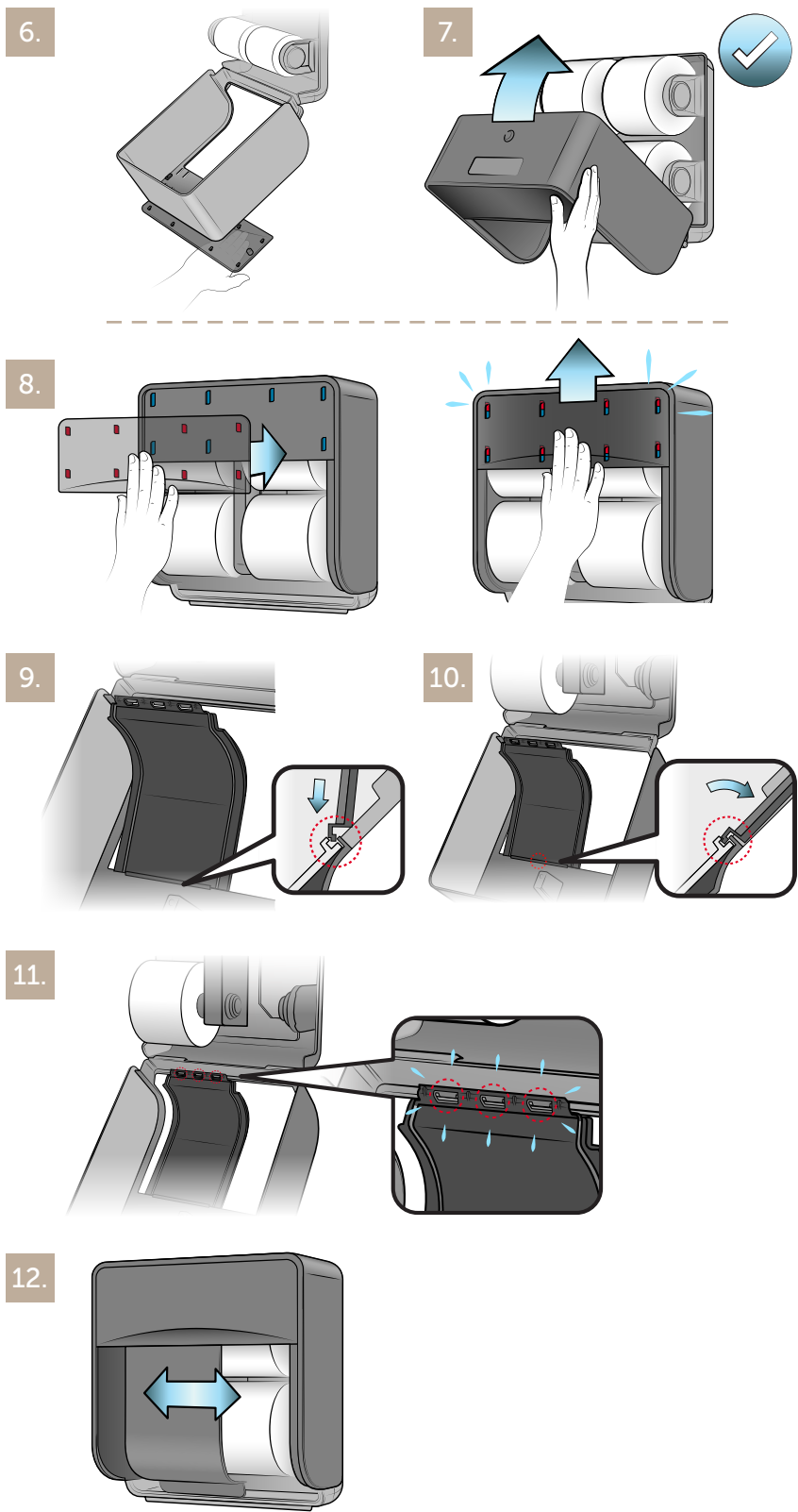
Alignez les points de verrouillage sur la nouvelle plaque frontale (rouge) sur les encoches correspondantes de la face avant du distributeur (bleu). Appuyez la nouvelle plaque frontale contre le distributeur et faites-la glisser pour l'insérer dans les points de fixation.

9. Center sliding door in middle of dispense opening. Align sliding door to upper sliding track.

10. Rotate sliding door to snap it securely into upper track.

11. Slide door to left side of dispenser to align 3 teeth of sliding door to 3 notches on sliding track. Gently push sliding door to engage the bottom sliding track, allowing the door to snap fully into secured position.

12. Test sliding door left and right to make sure door slides smoothly.



## Legal/ Juridique

®/™ Trademarks of Kimberly-Clark Worldwide, Inc. or its affiliates. © KCWW  
 ®/™ Marques de commerce de Kimberly-Clark Worldwide, Inc. ou de ses filiales. © KCWW  
 Parts made in Mexico and China, Assembled in Mexico / Pièces fabriquées au Mexique et en  
 Chine, et assemblées au Mexique / Partes hechas en México y China, armado en México / Teile  
 hergestellt in Mexiko und China, montiert in Mexiko / Peças produzidas no México e na China,  
 montagem no México / 部件在墨西哥和中国制造, 在墨西哥组装  
 Distributed in the U.S. by Kimberly-Clark Global Sales, LLC, Roswell, GA 30076-2199  
 Distributed in Canada by Kimberly-Clark Inc., Mississauga, Ontario L5B 3Y5  
 Kimberly-Clark Europe Limited, Walton Oaks, Dorking Road, Tadworth, Surrey, KT20 7NS, UK  
 www.kcprofessional.co.uk +44 (0) 1737 736000

Kimberly-Clark B.V., Copernicuslaan 35, 6716 BM Ede, Netherlands  
 Distributed in Australia by Kimberly-Clark Australia Pty. Ltd, Level 4, 100 Arthur Street, North Sydney,  
 NSW 2060 Tel: 1800 647 994 www.kcprofessional.com.au  
 Distributed in New Zealand by Kimberly-Clark New Zealand, Level 2, 123 Carlton Gore Road, Newmarket,  
 Auckland 1023, New Zealand Tel: 0800 447 814 www.kcprofessional.co.nz  
 中国责任单位: 金佰利 (中国) 有限公司 上海市黄浦区淡水路299号12楼 200025 咨询电话: 400 6517 268  
 www.kcprofessional.com.cn  
 Distributed in Singapore by Kimberly-Clark Singapore Pte. Ltd, 81 Tuas South Avenue 8, Singapore 637588.  
 Tel: 1 800 562 5275 www.kcprofessional.com.sg