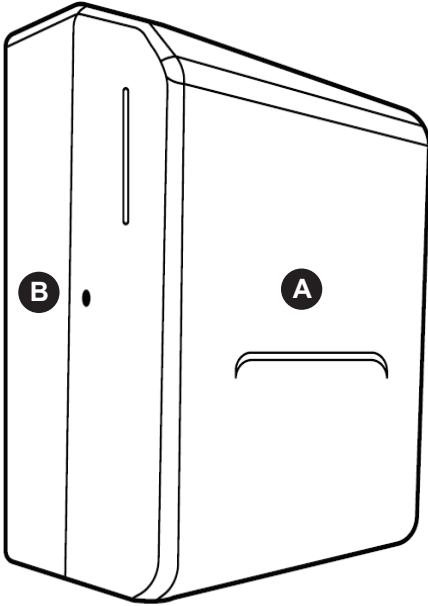


**IMPORTANT! For secure mounting, follow instructions thoroughly.**

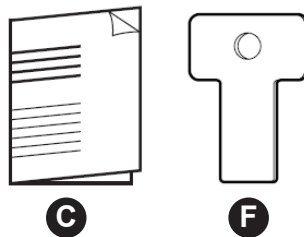
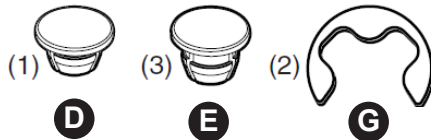


**Rough Wall Opening:**  
 10 3/4" Wide  
 15 3/8" High  
 4" Minimum Depth

**Materials Required:**

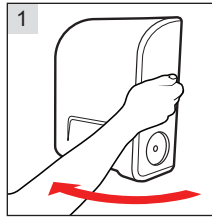
- Manual or electronic module
- Tape measure
- Combination Square
- Screw Driver
- Flashlight
- Hammer
- File
- Level

- A** Door
- B** Back Housing
- C** Instructions
- D** Silver Core Plug
- E** Black Swing Arm Plus
- F** Key
- G** Retaining Clips

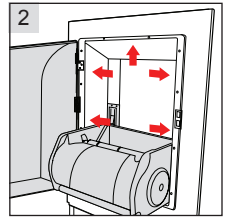


# INSTALLATION INSTRUCTIONS

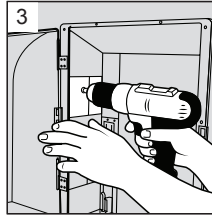
**A** Find the key to the current dispenser and open the towel dispensing area. (Figure 1)



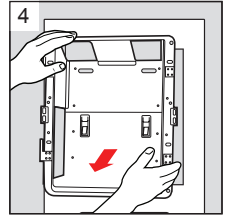
**B** Locate the screws holding the unit to the wall; there are usually 2 screws on each side and one on the top, but this can vary so check to make certain you find all the screws. (Figure 2)



**C** Remove the screws from both sides and the top of the towel unit. (Figure 3)

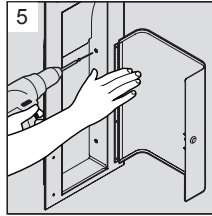


**D** Remove towel dispenser from the wall, this part will no longer be needed for this install (Figure 4).

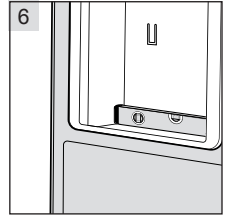


**E** Check to see if the trash can unit is installed with screws on the proper framing. If not, that will need to be addressed before moving forward with the install. (Figure 5)

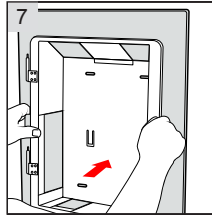
Note: the trash can unit needs to be installed securely with screws.



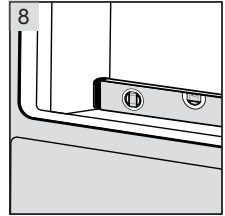
**F** Check to see that the trash can install is level. (Figure 6)



**G** Now add the Scott® Pro Recessed Stainless Dispensing System to the top part of the trash can system. (Figure 7)

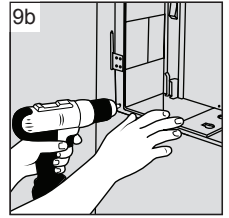
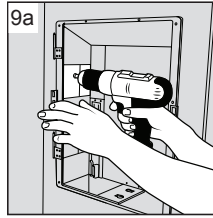


**H** Check the level of the dispenser before adding the screws to the install. (Figure 8)

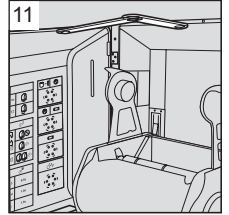
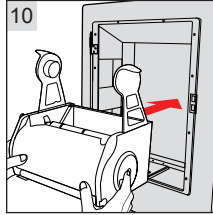


## INSTALLATION INSTRUCTIONS

**I** Add the installation screws to the slotted areas on the side of the towel dispenser. Do not overtighten. (Figure 9)

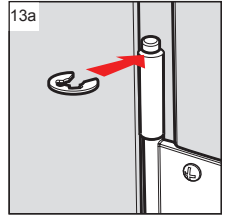
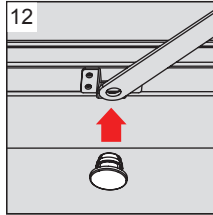


**J** Use the instructions that come with the module and install the module in the dispenser. Install the module by lining up the guides on the back of the back housing and push down gently to click the module in place. (Figure 10)



**K** Add instruction label to the inside of the door. Install the door. (Figure 11)

**L** The swing arm is taped to the back housing. Remove tape and install the swing arm to the door by using the black plug that came with the dispenser into the cover. This prevents the door from sagging. (Figure 12)



# INSTALLATION INSTRUCTIONS

**M** Add the retaining rings commonly known as “c” clips on the hinges for the door to keep the cover in place. (Figure 13)

**N** Close the door. (Figure 14)

**O** Add the use label to the front cover. (Figure 15)

*When using a power adapter, please use KC Adapter 51224 (5.9v). Ensure that incoming voltage does not exceed 6.5 volts.*

